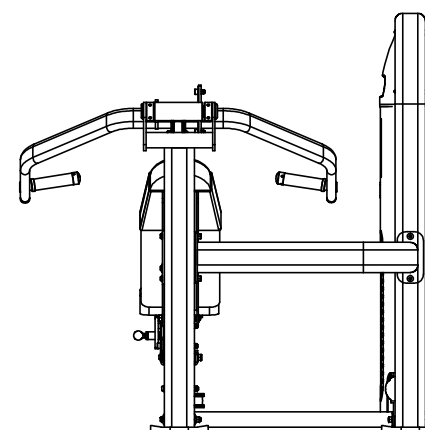
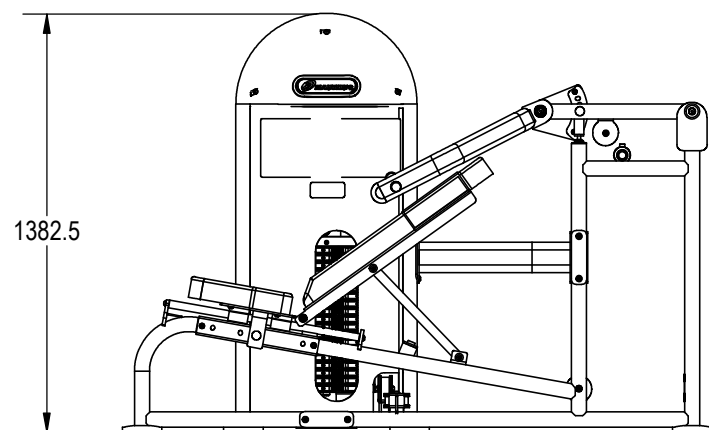
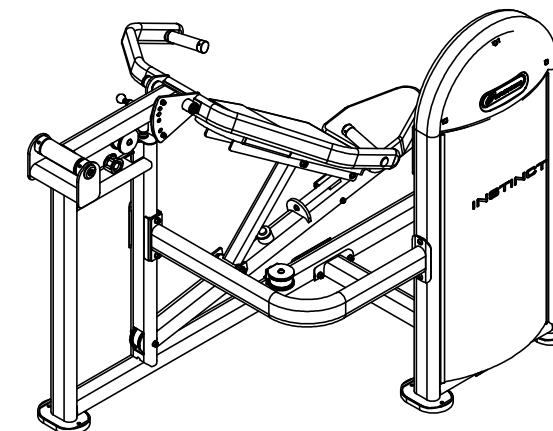
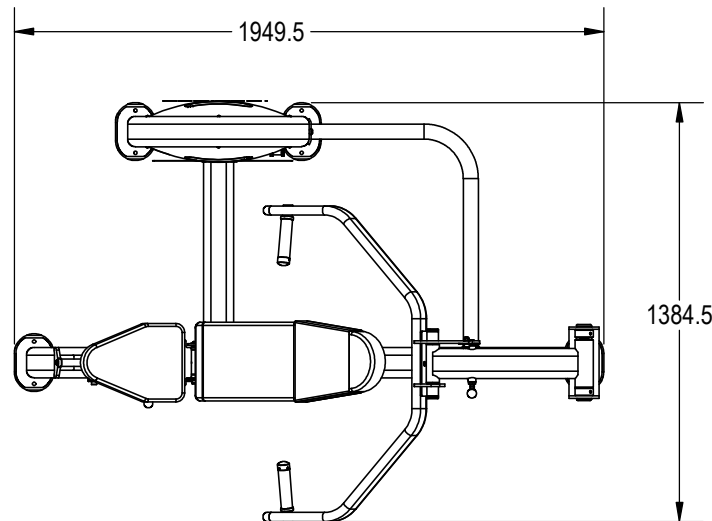


NOTES:

1. ASSEMBLE AND INSPECT PER SOP 620-7918..
2. INSTALL Kg STICKER AND AFFIX Lb STICKER TO INSIDE OF SHROUD WITH TAPE.
3. COLOR DICTATED BY THE SALES ORDER. REFERENCE THE MACHINES BOM FOR COMPONENTS CONTAINING -XX, -00XX AND -XXXXX.
 - a. COLOR: -XX COLOR DESIGNATOR AS SPECIFIED IN SOP 620-8222.
 - b. THE -XX CAN RESULT IN ONE COLOR FOR THE METAL SHROUD AND A DIFFERENT COLOR FOR THE METAL FRAME ALSO WITH A -XX LISTED ON THE BOM.
 - c. THE -00XX IS THE COLOR DESIGNATOR FOR UPHOLSTERY.
 - d. THE 5TH DESIGNATOR: "X" WITHIN -XXXXX DEFINES THE HEAD STRAP OR CUSTOM PRODUCTS BRAND. THIS IS SPECIFIED ON SALES ORDERS.
 - e. THE -XXXXX IS CREATED BY COMBINING THE -XX, -00XX AND THE 5TH DESIGNATOR.
 - f. ALL X'S SHOULD BE DEFINED ON THE SALES ORDER.

REVISIONS HISTORY

REV.	DATE	DESCRIPTION	ECO	BY
A	7/27/2016	INITIAL RELEASE	15470	AM



DOCUMENT STATUS:

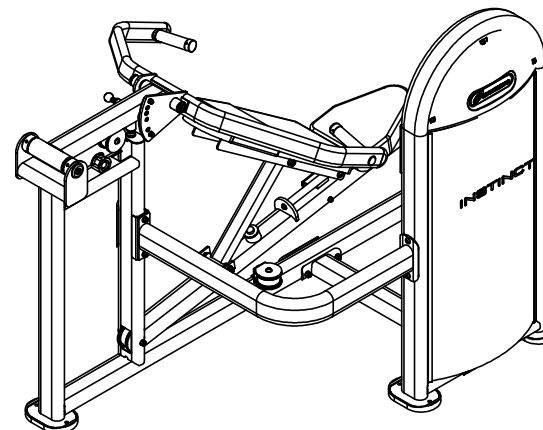
NOTICE OF PROPRIETARY INFORMATION
 THIS DOCUMENT SHALL NOT BE REPRODUCED NOR SHALL THE INFORMATION CONTAINED HEREIN BE USED BY OR DISCLOSED TO OTHER EXCEPT AS EXPRESSLY AUTHORIZED BY CORE HEALTH & FITNESS, LLC.

CLASS OF WORK	UNLESS OTHERWISE SPECIFIED DIMS ARE IN mm. TOLERANCES FOR MEASURE OF LENGTH ARE:							ANGLES = ±2°
	0.5 to 3	> 3 to 6	> 6 to 30	> 30 to 120	> 120 to 400	> 400 to 1000	> 1000 to 2000	
FINE	±0.05	±0.05	±0.1	±0.15	±0.2	±0.3	±0.5	----
MEDIUM	±0.1	±0.1	±0.2	±0.3	±0.5	±0.8	±1.2	±2
COARSE	±0.2	±0.3	±0.5	±0.8	±1.2	±2	±3	±4
VERY COARSE	----	±0.5	±1	±1.5	±2.5	±4	±6	±8

MATERIAL SEE BOM	THIRD ANGLE PROJECTION	
FINISH SEE NOTES	DRAWN	INITIAL AM
	CHECKED	DATE 7/27/16
	APPROVED	
VENDOR: N/A	P/N: N/A	U.O.M. MM

CORE HEALTH & FITNESS, LLC 4400 NE 77th Ave., Suite 300 Vancouver, WA 98662		
CORE PART NO	REV	
NL-D2120-29AGS	A	
TITLE NL,DSS,MULTI-PRESS,0-80,LNL		
SCALE: 1:25	SHEET 1 OF 3	SHEET SIZE: B

9					8					7					6					5					4					3					2					1				
J	I	H	G	F	E	D	C	B	A	J	I	H	G	F	E	D	C	B	A	J	I	H	G	F	E	D	C	B	A															
ITEM NO.	PART NUMBER	DESCRIPTION			QTY.	ITEM NO.	PART NUMBER	DESCRIPTION			QTY.																																	
1	050-5457	Label, S/N, Non-Powered, Primary, Core H&F			1	44	730-0913	BUMPER			1																																	
2	730-0216	PAD,FOOT,FRAME,WELDED			4	45	730-0960	CAP,HANDLE,GRIP,33MM			2																																	
3	730-0233	SHROUD,REAR,IN-S5100			1	46	730-0992	ASSY,SEAT,GUIDE RAIL			1																																	
4	730-0236	PIN, BELT ANCHOR			2	47	730-0993	BACK PAD,SUPPORT,BRACKET			1																																	
5	730-0237	SCREW, M10x30, SHS,SS			2	48	730-0994	BACK,SUPPORT,PIVOT,TUBE			1																																	
6	730-0288	PAD,SEAT,IN-D2120			1	49	730-0995	PLATE,SUPPORT,SEAT/PULL KNOB			1																																	
6	730-0289	PAD,BACK REST,IN-S2120			1	50	730-0996	PLATE,M50X405			1																																	
8	730-0290	LEVERAGE ARM,ADJUSTMENT,PULL KNOB			1	51	730-0997	STOP,ROM,IN-S2120			1																																	
9	730-0291	END CAP,IN-D2120			2	52	730-0998	LEVERAGE ARM,HANDLE,RUBBER,GRIP,SLEEVE			2																																	
10	730-0292	CAP, ARMS, IN-S2100			2	53	730-1099	BUSHING,12MM IDX 13MM			6																																	
11	730-0293	HEAD STRAP,IN-D2120			1	54	730-1102	NYLOC SELF LOCKING NUT, ST STL A2 ISO			3																																	
12	730-0316	ASSY,SPRING PIN,IN-2120			1	55	730-1103	NUT,M8,NYLON PATCH,SS			4																																	
13	730-0384	LOGO,INSTINCT			1	56	730-1104	NUT,M10,NYLON PATCH,SS			14																																	
14	730-0385	LABEL,CAUTION,PINCH POINT			1	57	730-1109	SCREW,M10X80,BH,SS			2																																	
15	730-0562	BUMPER,STACK,60MM			2	58	730-1110	SCREW,M10X115,BHC,SS			1																																	
16	730-0565	CAP, END, HANDLE			2	59	730-1112	SCREW, M10x130, BH, SS			6																																	
17	730-0656	CAP,50MM OD			2	60	730-1114	SCREW, M10x135, BH, SS			3																																	
18	730-0660	BUMPER,LEVERAGE ARM,STOPPER			1	61	730-1118	SCREW, M10, BHC, HK, SS			2																																	
19	730-0662	WEIGHT STACK,GUIDE RAIL			2	62	730-1119	SCREW, M10x35, BH, SS			8																																	
20	730-0673	ISO 15 RBB - 1025 - 14,SI,NC,14_68			2	63	730-1122	SCREW,M10X63,BHC,SS			5																																	
21	730-0679	STOPPER, IN-S1011			4	64	730-1138	SCREW,M8X20,BHC,SS			6																																	
22	730-0702	SHROUD,UPPER			2	65	730-1152	SEAT,GUIDE,BRACKET			2																																	
23	730-0721	PULLEY, 75MM			5	66	730-1155	SCREW, 10-32X3.2, SET			4																																	
24	730-0724	WEIGHT STACK,FRAME			1	67	730-1160	PULLEY, 75MM			1																																	
25	730-0725	ASSY,MAIN FRAME			1	68	730-1327	SHROUD,LNL,D2120			1																																	
26	730-0726	CROSSBEAM,UPPER,FRAME			1	69	730-1401	WSA-LNL,225LB,19H			1																																	
27	730-0727	LEVERAGE ARM,PIVOT,TUBE			1	70	730-1491	LABEL,INSTRUCTIONS,LOCK N LOAD			1																																	
28	730-0728	LEVERAGE ARM,U-SHAPE,HANDLE			1	71	730-7221-XXX	STICKER, PLACARD, INSTRUCTION, MP, NAUT.			1																																	
29	730-0731	CROSSBEAM,LOWER,FRAME			1	72	731-0335	STICKER, MADE IN CHINA, IP			1																																	
30	730-0732	PIVOT,SHAFT,M25X213			1	73	731-7311	STICKER,NAUTILUS,DECO,45MMX191MM			2																																	
31	730-0778	BELT			1																																							
32	730-0845	SHROUD,MOUNTING,U-STYLE,CLIP			6																																							
33	730-0846	SHAFT,25MM X 234			1																																							
34	730-0858	BUSHING, 1.0, BRONZE			2																																							
35	730-0871	SCREW,M10X30,FHM,HK,SS			4																																							
36	730-0873	SCREW,M6X16,FHM,HK,SS			8																																							
37	730-0876	WASHER,M12,FENDER,SS			6																																							
38	730-0888	SCREW,M8X125,SHS,SS			2																																							
39	730-0890	SCREW,M8X25,SHS,SS			2																																							
40	730-0895	SCREW,M8X6,SET,SS			2																																							
41	730-0896	SCREW,M8X16,SET,SS			4																																							
42	730-0908	WASHER,M10,FLAT,SS			38																																							
43	730-0910	WASHER,M8,BELLEVILLE,SS			10																																							

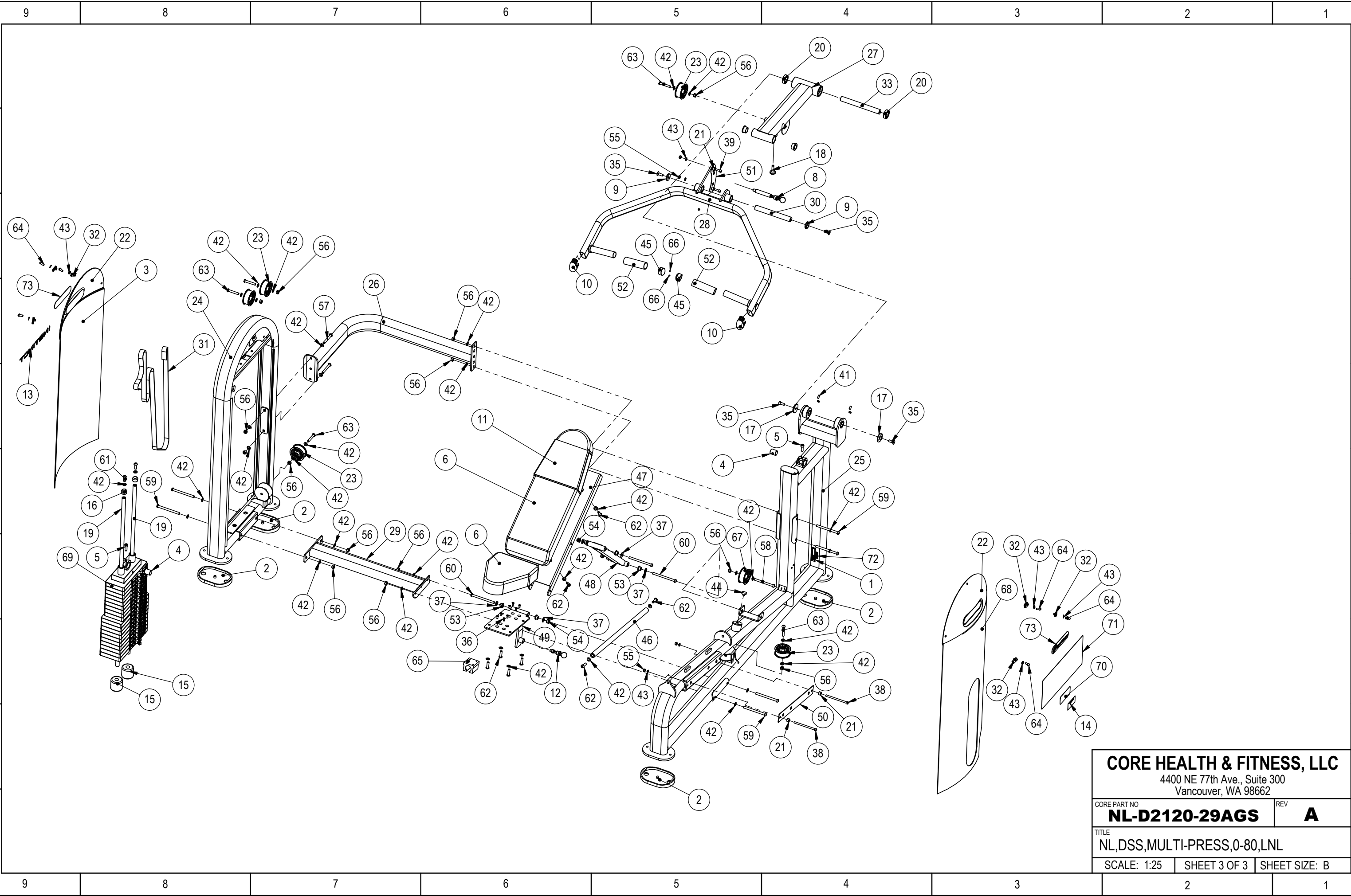


REPLACEMENTS				
Item	StarTrac p/n	Description	Qty	
68	730-1327	SHROUD,LNL,D2120	1	730-1327
5	730-0288	PAD,SEAT,IN-D2120	1	IN-D21201200
6	730-0289	PAD,BACK REST,IN-S2120	1	IN-D21201700
7	730-0290	ASSY,SPRING PIN,LONG,IN-D2120	1	IN-D21201800
8	730-0291	END CAP,IN-D2120	2	IN-D21202000
1	730-0216	PAD,FOOT,FRAME,WELDED	4	IN-B75030900
2	730-0233	SHROUD,REAR,IN-S5100	1	IN-S10121500
9	730-0292	CAP,ARMS,IN-S2100	2	IN-S21003000
10	730-0293	HEAD STRAP, IN-D2120	1	N/A
23	730-0228	KIT, UPPER SHROUD	1	IN-D10132800
			3	PNLM8*20A2-70
			3	GB958A2-70
24	730-0229	KIT, PULLEY REPLACEMENT, 76 MM, SINGLE	1	IN-S51101000
			1	PNLM10*63A2-70
			1	NM10A2-70
			2	GB9510A2-70
			2	IN-B75021300
46	730-0156	ASSY ENDCAP, 32MM, ALUMINUM	2ft	IN-B75021600
			4	YZGB7710-32*3.2DS2
			1	IN-D21201300
			2	IN-S10111200
			2	GB70M8*25A2-70
			2	NM8A2-70
52	730-0294	KIT, ADJUSTMENT PLATE, IN-D2120	2	GB958A2-70
N/A	730-0173	KIT, HARDWARE, IN-D2020	n/a	N/A
32	730-0215	KIT, BELT REPLACEMENT	15.5 FT	IN-S21002800
			2	IN-S10121700
			1	GB70M10*30A2-70

CORE HEALTH & FITNESS, LLC

4400 NE 77th Ave., Suite 300
Vancouver, WA 98662

CORE PART NO	NL-D2120-29AGS	REV	A
TITLE	NL,DSS,MULTI-PRESS,0-80,LNL		
SCALE: 1:25	SHEET 2 OF 3	SHEET SIZE: B	



CORE HEALTH & FITNESS, LLC		
4400 NE 77th Ave., Suite 300 Vancouver, WA 98662		
CORE PART NO	NL-D2120-29AGS	REV A
TITLE NL,DSS,MULTI-PRESS,0-80,LNL		
SCALE: 1:25	SHEET 3 OF 3	SHEET SIZE: B